

**高雄國際機場**  
KAOHSIUNG INTL AD

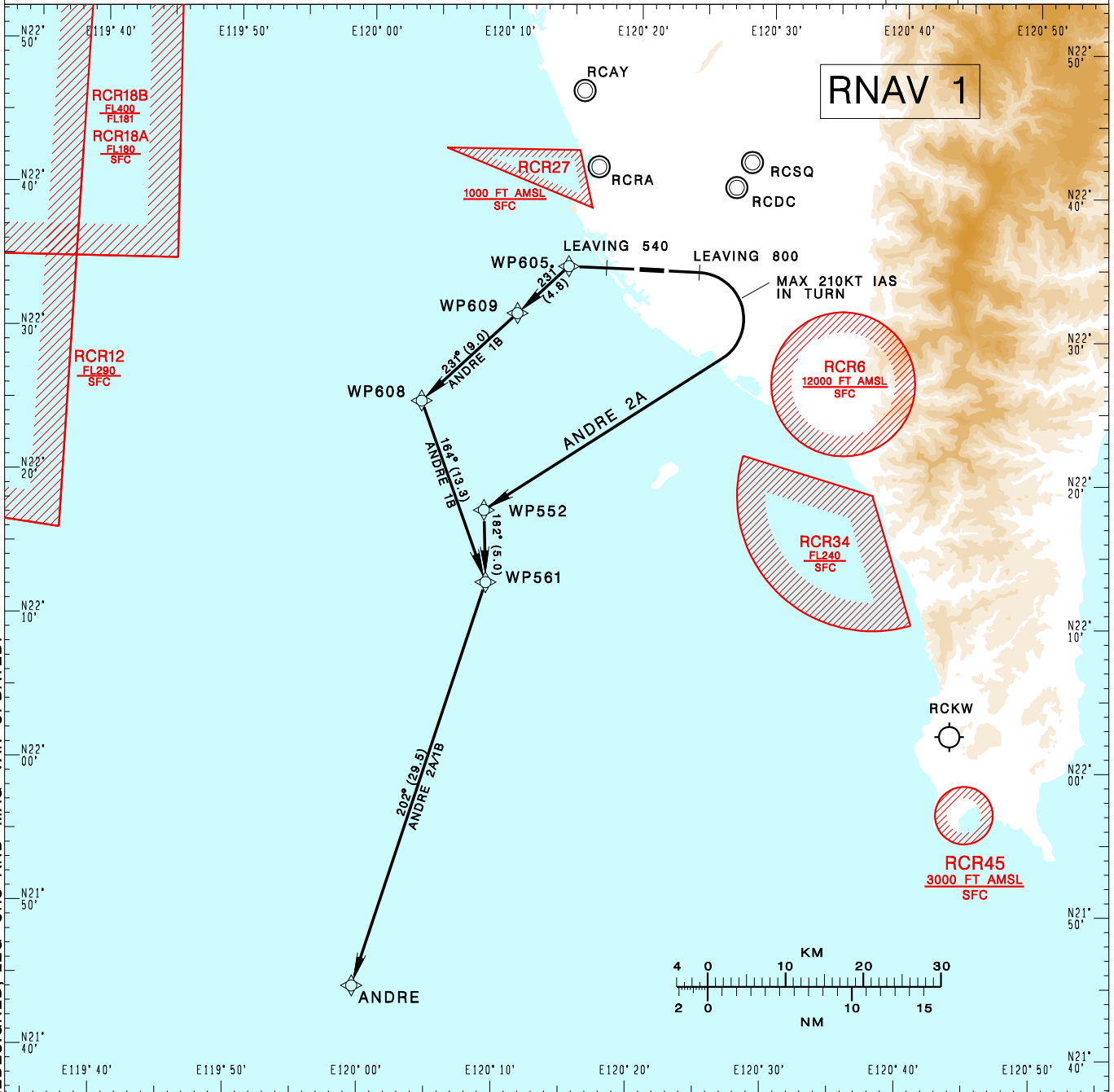
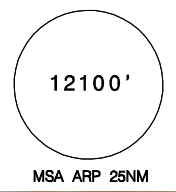
RCKH SID  
ANDRE 2A RNAV(RWY09)  
ANDRE 1B RNAV(RWY27)

KAOHSIUNG APP 124.7 125.7	KAOHSIUNG TWR 118.7 120.7	ATIS 127.8
------------------------------	------------------------------	---------------

Apt Elev: 32'      Trans Level: FL130      Trans Alt: 11,000'

BEARINGS ARE MAGNETIC; DISTANCES ARE NAUTICAL MILES; ELEVATIONS, HEIGHTS IN FEET

VAR 4° W-2023



CHANGES: LEG BEFORE WP552 REDESIGNED: LEG CRS AND MAG VAR UPDATED.

**ANDRE TWO ALFA RNAV DEPARTURE**

Climb on RWY HDG until 800ft, then turn right direct to WP552 then to WP561, ANDRE. Cross WP552 at or below 7,000ft.

**ANDRE ONE BRAVO RNAV DEPARTURE**

Climb on RWY HDG until 540ft, then direct to WP605, then to WP609, WP608, WP561, ANDRE. Cross WP609 at or below 8,000ft, cross WP561 at or below 9,000ft.

**NOTE**

- ANDRE 2A:  
Minimum climb gradient required: 6.0%(365 ft/NM) until 2,000ft.  
Speed restriction of 210KT IAS maximum until established on track to WP552.
- Caution: pier cranes, terrain and stacks east, west and south of the airport.
- ATS surveillance required.